



THE FIDDLEWOODZ

@ KL Metropolis



INTRO

A musical instrument. A blooming tree.
A destination. The Fiddlewoodz @ KL
Metropolis is a concerto of nature's orchestra
expanding beyond limits. A song of harmony,
synthesizing many parts and elements into
a single whole to deliver an incredible living
environment inspired by the spirit of travel.



ECO-RESPONSIBLE DEVELOPER

The GreenRE logo has been the hallmark symbol for buildings and townships nationwide that encourages sustainable living for residents and developer.

At EXSIM, every venture we take utilised technology in an intelligent and organic manner for the advancement of mankind.

We are also equally intensifying our efforts to create buildings with a specific character which exemplify innovative green features.

THE FIDDLEWOODZ

@ KL METROPOLIS

Artist's Impression





EXPLORE

NEW HORIZONS

Coherence of space, function, design and ideas in a space where wholeness and continuity intertwine to elevate a home into a haven. From spatial connectivity to materiality to the experiential, The Fiddlewoodz @ KL Metropolis is an ensemble telling the story of wanderlust.

A duo of contemporary towers – understated and elegant in their simplicity – provide the setting for a whimsical tale of wonder and wander. The discreet external architecture unfolds to reveal an ambitious, aspiring space within. Unbridled by the limitations of concrete walls, The Fiddlewoodz @ KL Metropolis reaches for a bold vision – to bring the world into this serviced residence solely through the artistry of architectural, landscaping and interior design.

By using colors, materials, structures, patterns, design elements and flora in a strategic and clever way, reality is reimagined. Thematic spatial experiences and the unique character of different places and cultures from around the globe are transported into here.

Step into a home that transports you into resort living and a globetrotting lifestyle.

THE FIDDLEWOODZ

Artist's Impression





CARRIED AWAY

ON WANDERLUST

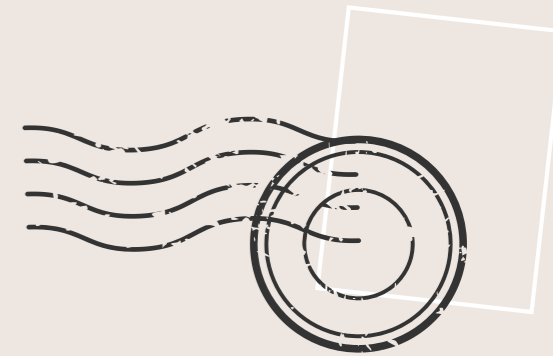
Let's traverse the world. Discover the breathtaking wonders of nature. Explore hidden gems. Revel in the diversity of cultures, traditions and lifestyles.

What if you could bask in the warmth of the setting sun at Santorini while drinking in the incredible views from azure pools? What would it be like to cast your eyes for the first time on the dazzling, other worldly beauty of the Aurora Borealis? How delightful would it be to stroll under dainty pink cherry blossoms of Japan?

This is the heart and soul of The Fiddlewoodz @ KL Metropolis. An ode to this stunning planet we call home and her most beautiful destinations. A wanderlust tune resonating in each of our hearts, singing of adventures, inspirations and renewing found on the road.



TAKE A
**JOURNEY OF
DISCOVERY**



to :

*Travel opens your heart, broadens your
mind and fills your life with stories to
tell. - Paula Bendfeldt*

Fusing together some of the most defining experiences and elements from around the globe, The Fiddlewoodz @ KL Metropolis is a world where one realm seamlessly merges into another, each as mesmerizing and uplifting as the next.

This is where you can travel the world without leaving home. After all, we are all wanderers at heart; nomads who yearn to gallivant. We present to you The Fiddlewoodz @ KL Metropolis, a home where your imagination is sparked by the dynamic environment artfully replicating globetrotting voyages and encounters.

From the moment you enter into the residences, curated spaces transport you to a world of discovery that tantalizes you from every perspective. Like an enchanting symphony, a mélange of parts are beautifully woven together to inspire, enchant, enrapture, and rejuvenate. Come alive with wonder and delight as you discover different experiences, indulge your senses and refresh your heart, mind and soul.

Live that feeling of adventure and discovery right where you are, right at your doorstep.

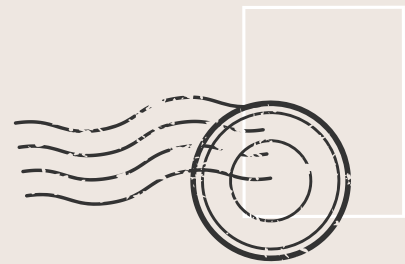


LEVEL 53
360° SANTORINI SKY POOL
Artist's Impression

COLLECT MOMENTS

Simplicity and functionality direct our layout philosophy. Wide open areas are bathed with welcoming natural light. Sprawling balconies and lanais invite the outside in. Sizeable shared spaces are interspersed with intimate private nooks and rooms. These are homes that are designed to inspire and rejuvenate.

The units are thoughtfully designed to put the power of decision and free reign of creativity in your hands. Efficient planning provides optimal space utilization in well laid-out two to three bedrooms residences.



to :

*Life is a trip, travelling is living
twice. - Omar Khayyam*



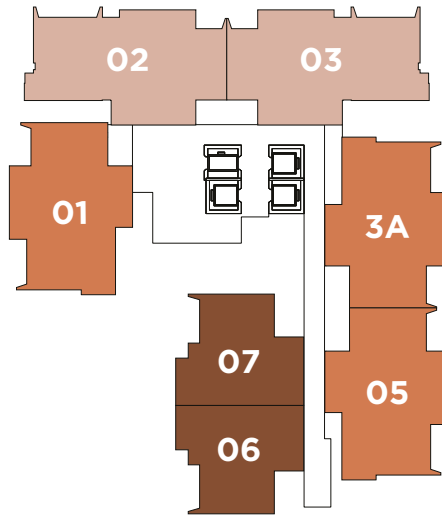
LAYOUT PLANS

NORTHEAST

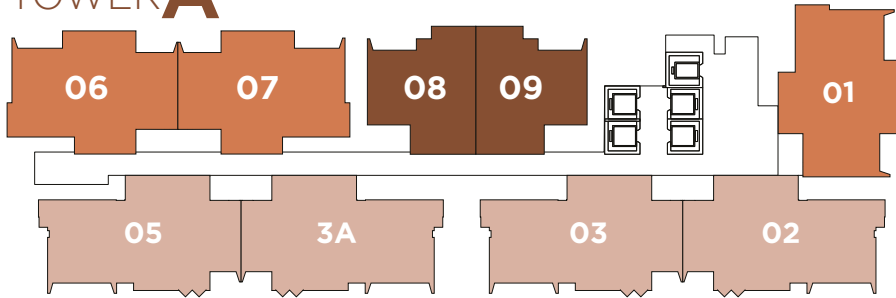
SEGAMBUT



TOWER B



TOWER A



SOUTHWEST

DAMANSARA HEIGHT / MONT KIARA



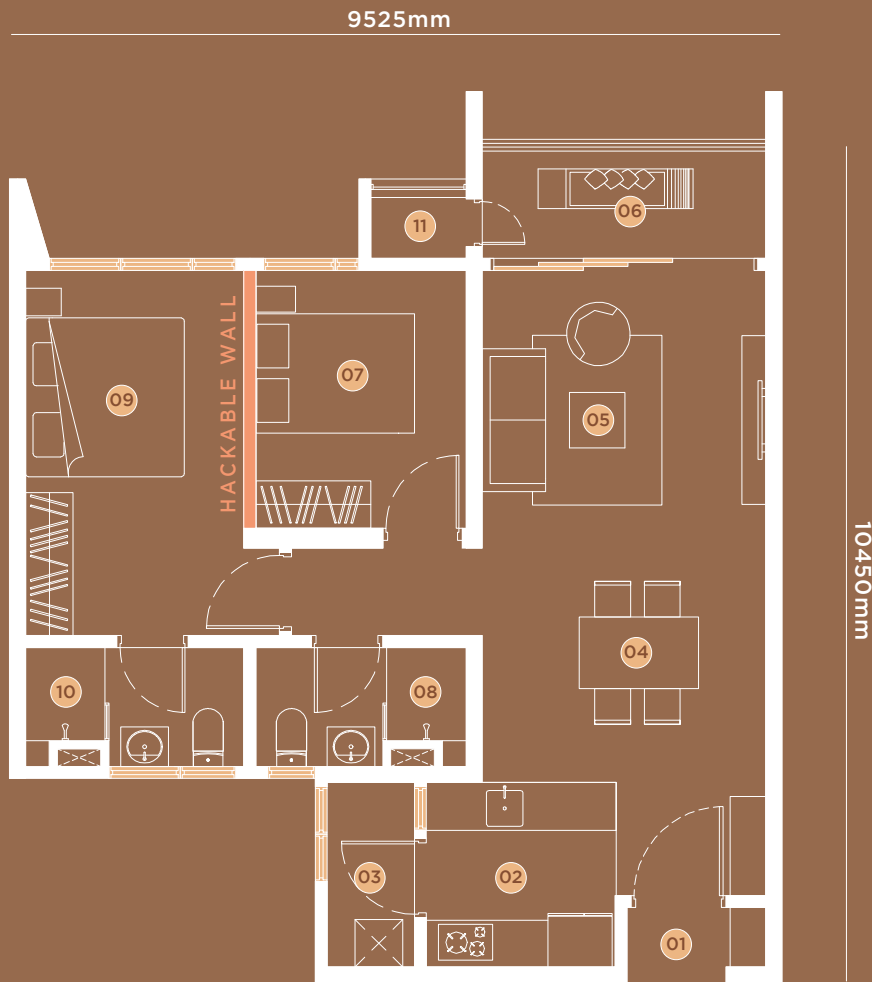
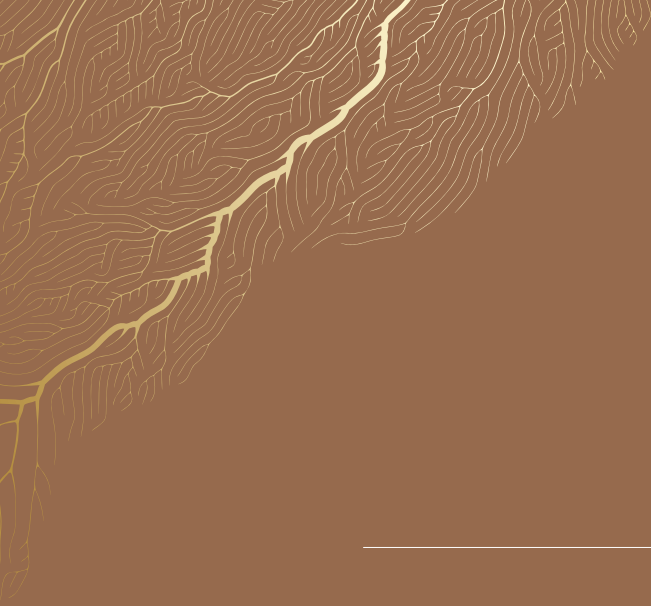
NORTHWEST

DESA PARKCITY



SOUTHEAST
TAMAN TUNKU / BUKIT TUNKU



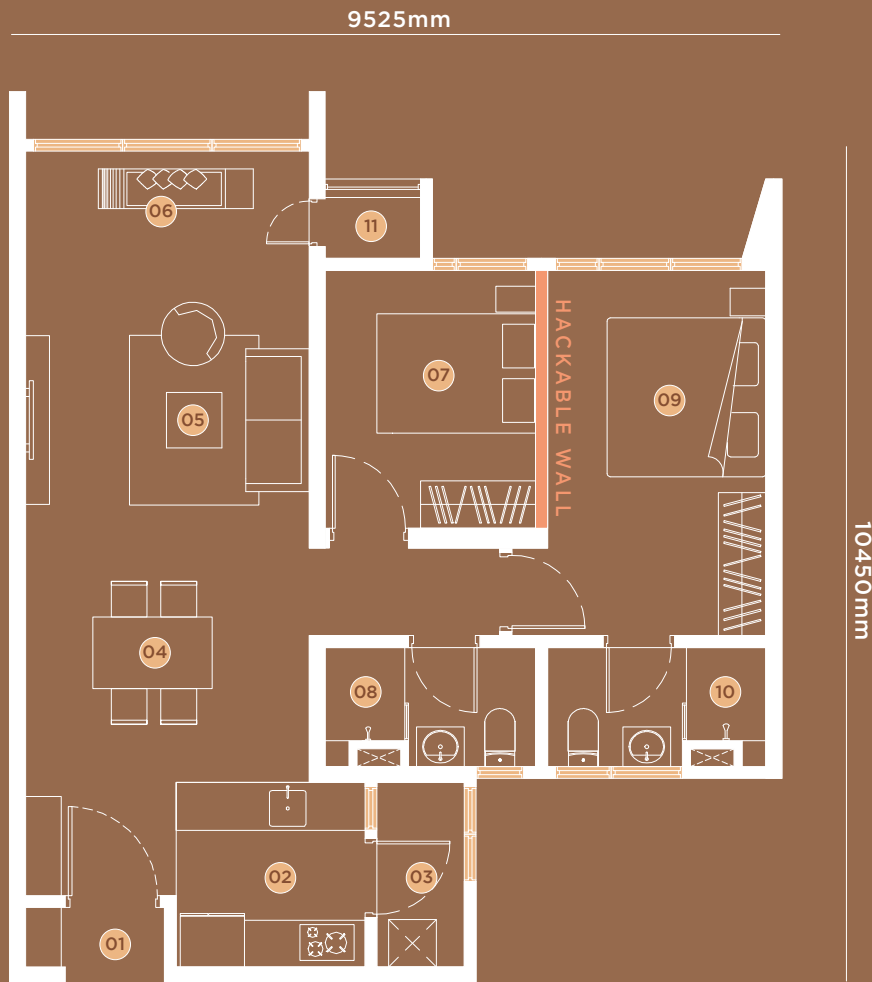


TYPE

A1 Balcony
2R2B
889 sq.ft.

- 1. Foyer
- 2. Kitchen
- 3. Yard
- 4. Dining
- 5. Living
- 6. Balcony
- 7. Bedroom 1
- 8. Bathroom 1
- 9. Master bedroom
- 10. Master bathroom
- 11. A/C Ledge





TYPE

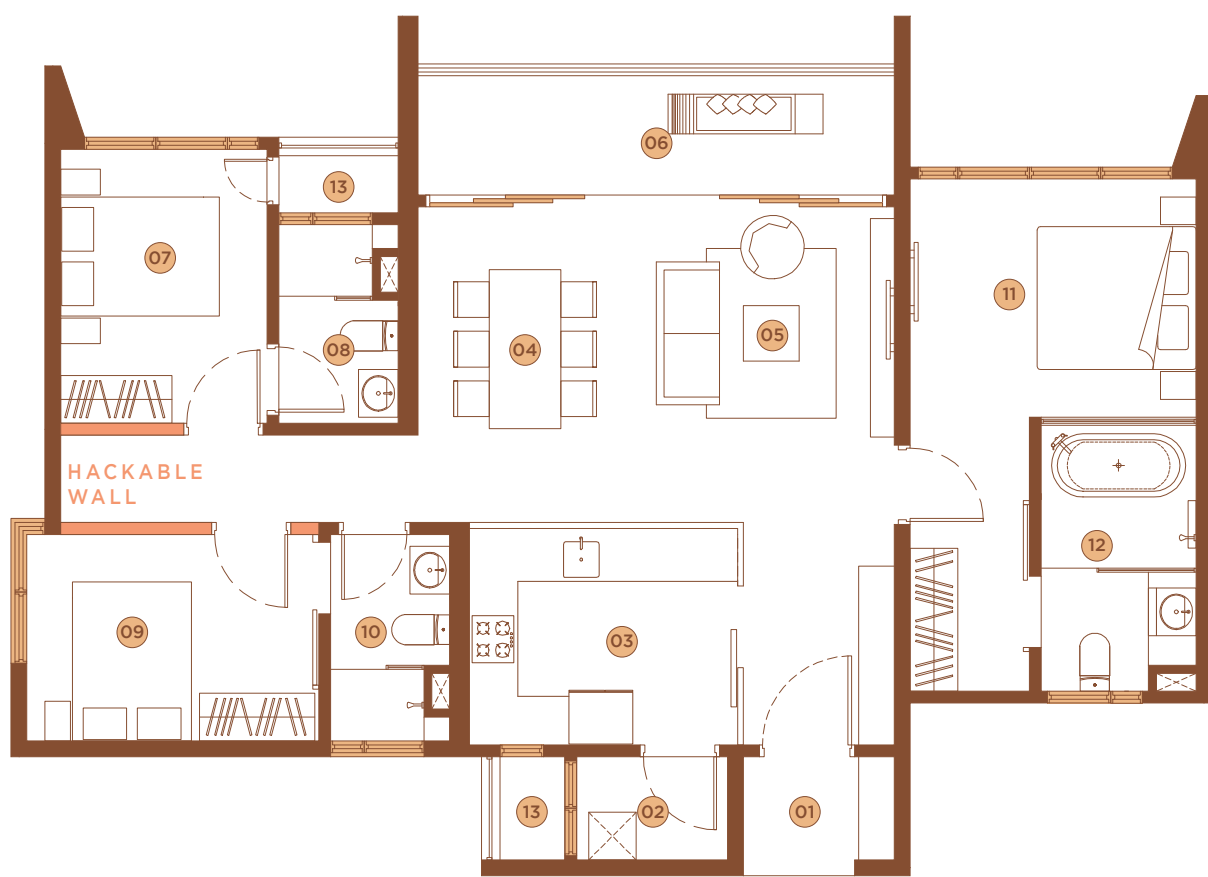
A2 Lanai
2R2B
889 sq.ft.

- | | |
|------------|---------------------|
| 1. Foyer | 7. Bedroom 1 |
| 2. Kitchen | 8. Bathroom 1 |
| 3. Yard | 9. Master bedroom |
| 4. Dining | 10. Master bathroom |
| 5. Living | 11. A/C Ledge |
| 6. Lanai | |





14925mm



10050mm

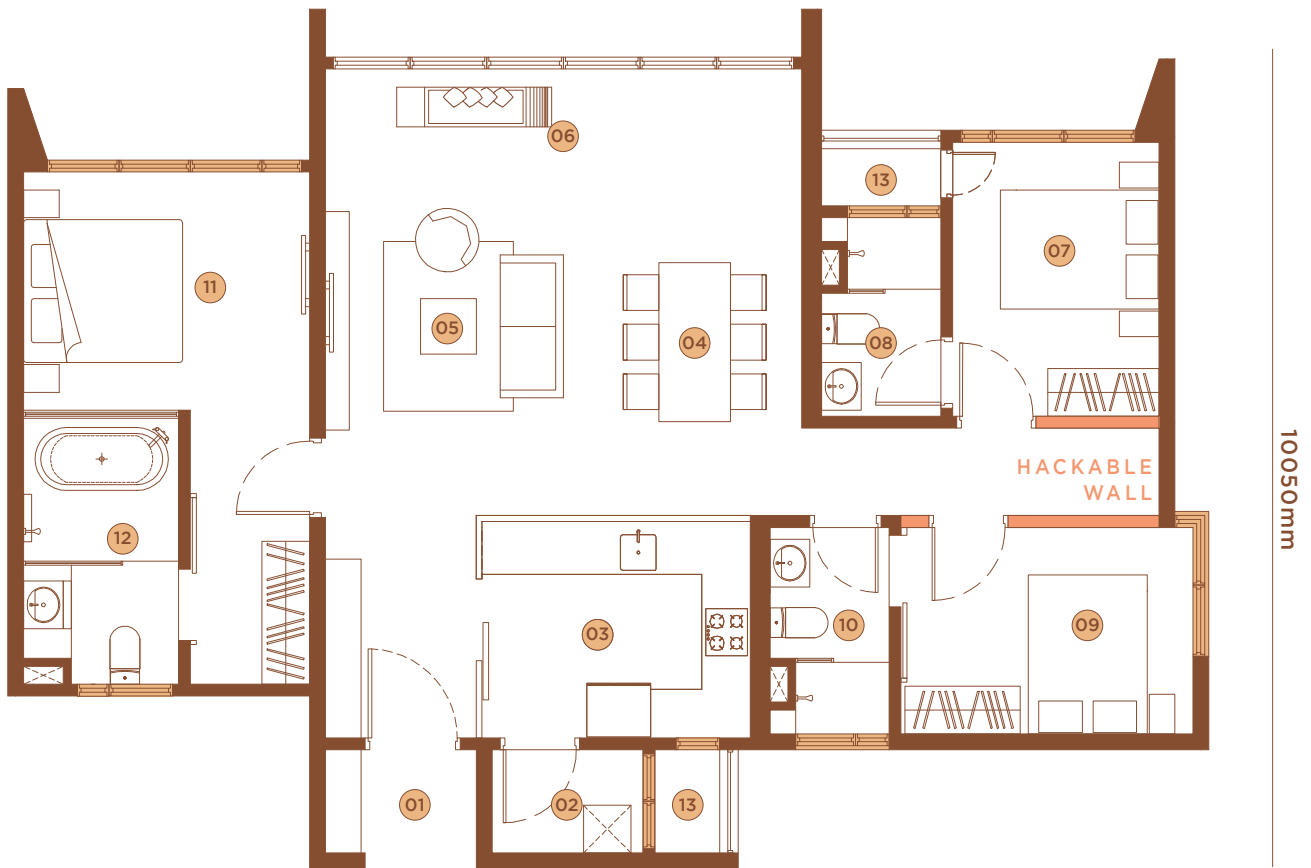
TYPE

B1 Balcony

3R3B
1,292 sq.ft.

- 1. Foyer
- 2. Yard
- 3. Kitchen
- 4. Dining
- 5. Living
- 6. Balcony
- 7. Junior master bedroom
- 8. Junior master bathroom
- 9. Bedroom 1
- 10. Bathroom 1
- 11. Master bedroom
- 12. Master bathroom
- 13. A/C ledge

14925mm



TYPE

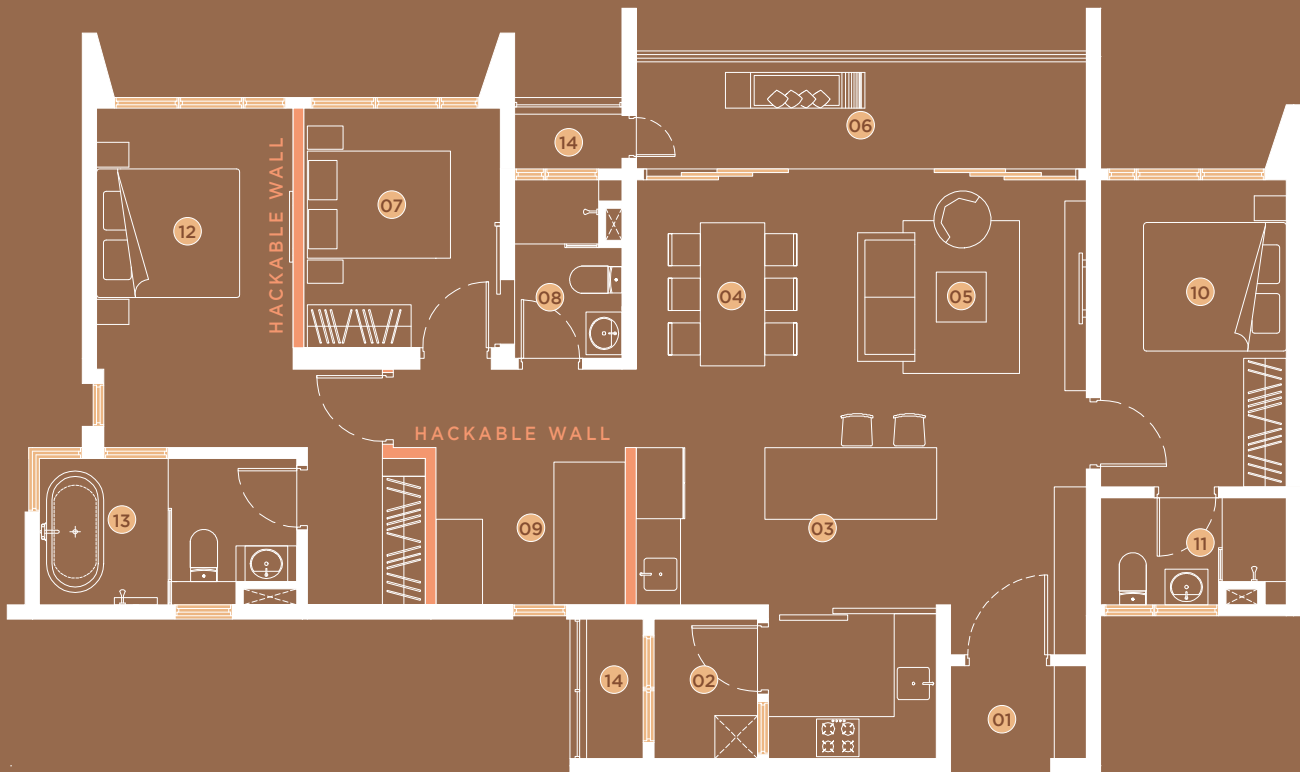
B2 Lanai

3R3B
1,292 sq.ft.

- 1. Foyer
- 2. Yard
- 3. Kitchen
- 4. Dining
- 5. Living
- 6. Lanai
- 7. Junior master bedroom
- 8. Junior master bathroom
- 9. Bedroom 1
- 10. Bathroom 1
- 11. Master bedroom
- 12. Master bathroom
- 13. A/C ledge



17650mm



9925mm

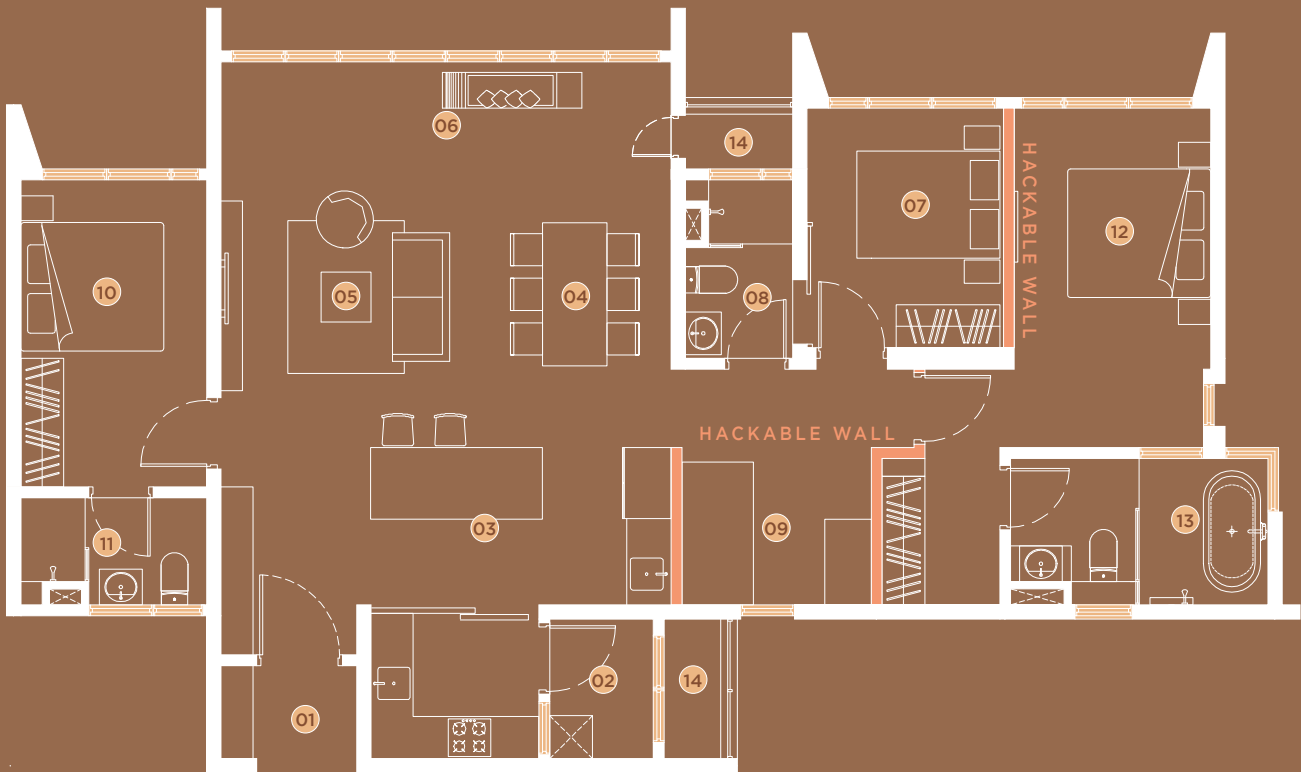
TYPE

C1 Balcony

3+1R3B
1,469sq.ft.

- | | |
|--------------|----------------------------|
| 1. Foyer | 8. Bathroom 1 |
| 2. Yard | 9. Study |
| 3. Kitchen | 10. Junior master bedroom |
| 4. Dining | 11. Junior master bathroom |
| 5. Living | 12. Master bedroom |
| 6. Balcony | 13. Master bathroom |
| 7. Bedroom 1 | 14. A/C ledge |

17650mm



9925mm

TYPE

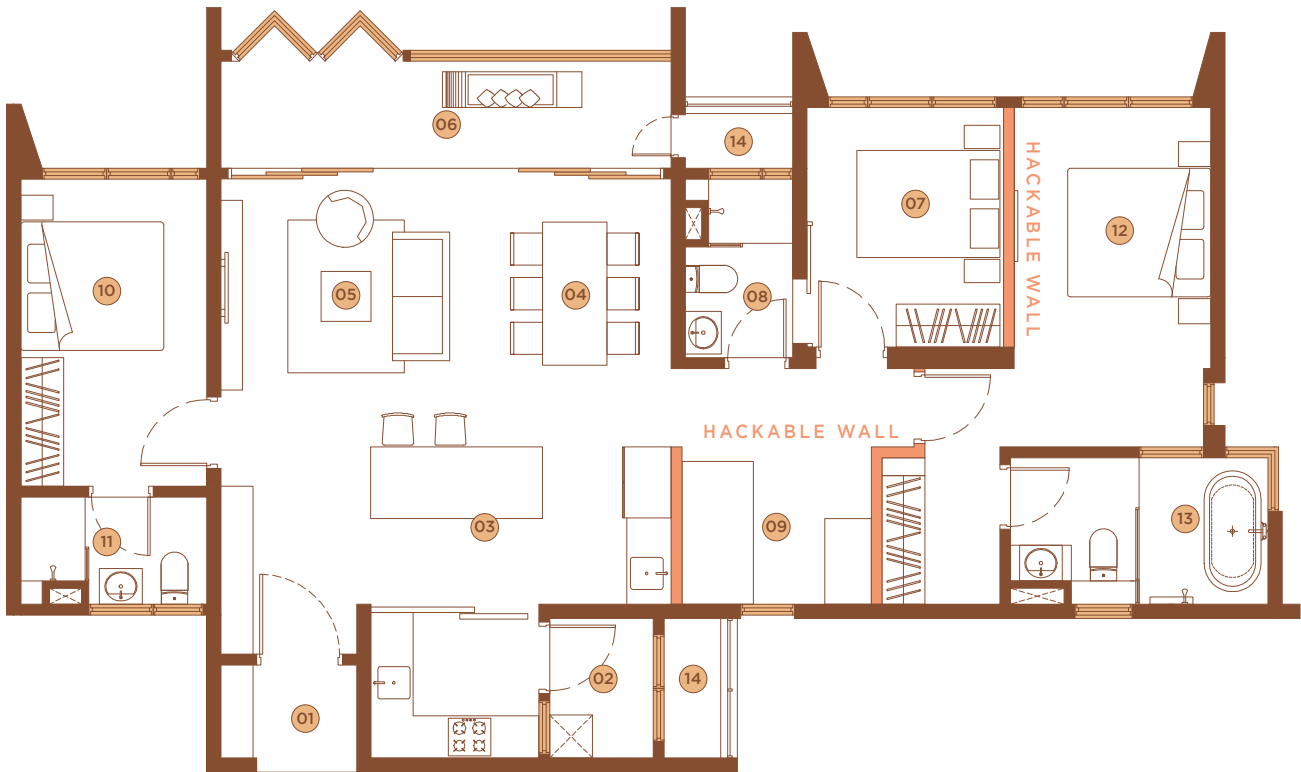
C2 Lanai

3+1R3B
1,469sq.ft.

- 1. Foyer
- 2. Yard
- 3. Kitchen
- 4. Dining
- 5. Living
- 6. Lanai
- 7. Bedroom 1
- 8. Bathroom 1
- 9. Study
- 10. Junior master bedroom
- 11. Junior master bathroom
- 12. Master bedroom
- 13. Master bathroom
- 14. A/C ledge



17650mm



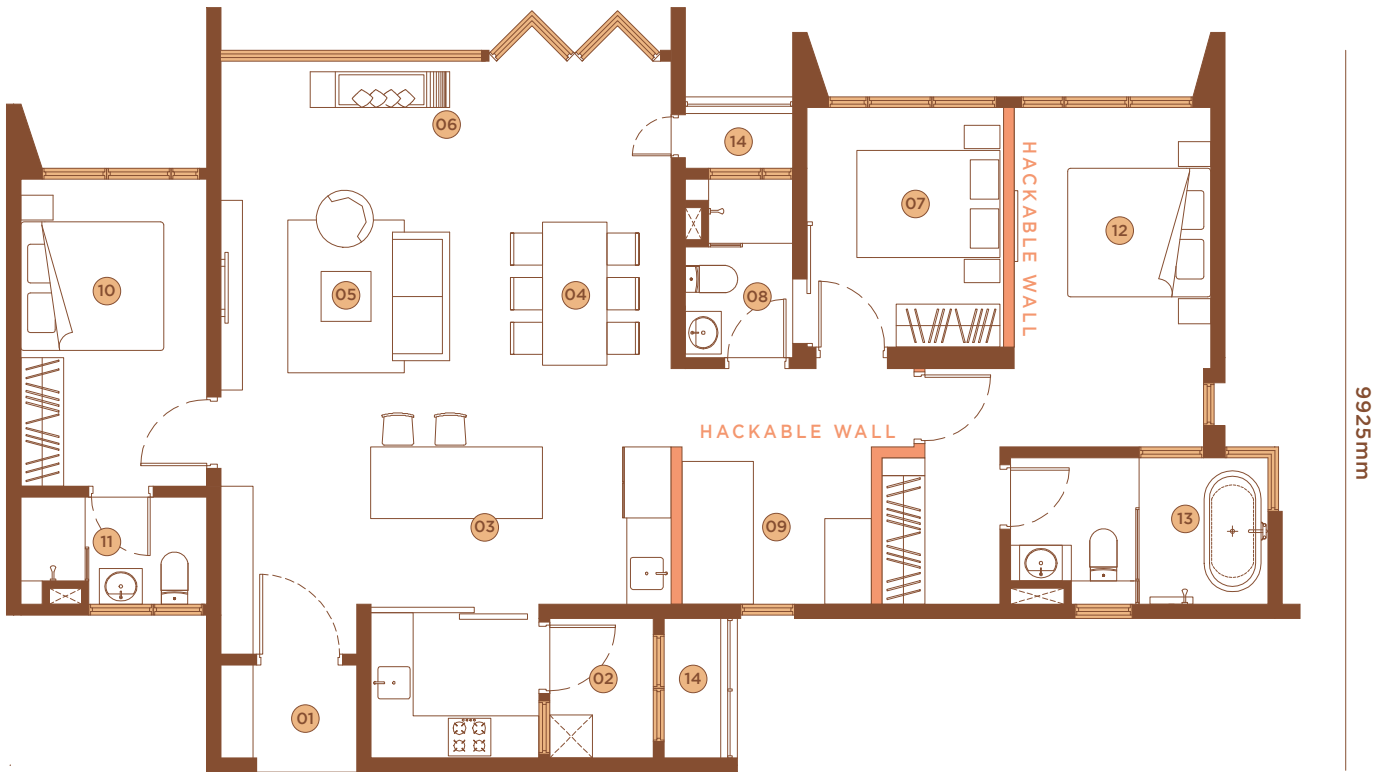
9925 mm

TYPE

C3 Balcony
3+1R3B
1,476sq.ft.

- | | |
|--------------|----------------------------|
| 1. Foyer | 8. Bathroom 1 |
| 2. Yard | 9. Study |
| 3. Kitchen | 10. Junior master bedroom |
| 4. Dining | 11. Junior master bathroom |
| 5. Living | 12. Master bedroom |
| 6. Balcony | 13. Master bathroom |
| 7. Bedroom 1 | 14. A/C ledge |

17650mm



TYPE

C4 Lanai
3+1R3B
1,476sq.ft.

1. Foyer
2. Yard
3. Kitchen
4. Dining
5. Living
6. Lanai
7. Bedroom 1

8. Bathroom 1
9. Study
10. Junior master bedroom
11. Junior master bathroom
12. Master bedroom
13. Master bathroom
14. A/C ledge

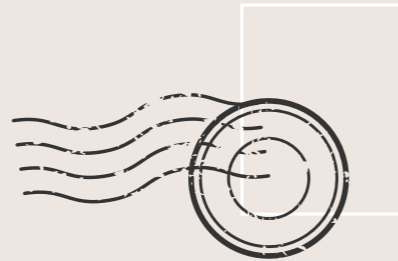


MAKE MAGIC REAL

Step into a horizon that defies the imagination. Geography is only a matter of perspective. Imagine if the wonder of the world's most defining locations can be created right where you are. Imagine travelling to exotic locations any time you want without leaving home.

The Fiddlewoodz @ KL Metropolis strives to make this a reality for you. Bright hues of cherry blossoms transport you to balmy spring days in Japan while a medley of plants and blooms in the Aurora Sky Garden mimic the twinkling lights of the Aurora Borealis. Pools are designed with a nod to the Santorini wonders.

It is not just about a destination but the whole experience of exploration. Hand-picked artwork pay homage to cultures around the world. Lush gardens bring to mind pampering resorts.



to :

*Wherever you go, go with all
your heart. - Confucius*





LEVEL 8
NIHON DINING & TEA
Artist's Impression



LEVEL 52
MOROCCAN SKY LOUNGE
Artist's Impression



LEVEL 8
GYMNASIUM STUDIO
Artist's Impression



LEVEL 8
CELLAR DINING
Artist's Impression

REIMAGINE REALITY

The world is your playground. Simple is made special every day. At every turn, ordinary can quickly become extraordinary. At The Fiddlewoodz @ KL Metropolis, living, playing and dining need never be mundane. Spaces are brimming with promises, waiting to be uncovered by your ingenuity.

Cradled within a cocoon of genius design, you could be anywhere in the world! Our facilities decks, gym, lounges, function space, playroom, gardens and pools recreate some of the most well-known destinations and beloved travel experiences.

You could be frolicking in a pool in Greece; scrambling through hobbit holes in the Hobbiton; dining in a tatami lounge in a Japanese tea house; sipping wine in a cavern dining lounge; wandering in a Copenhagen hall; or finding your Zen in a yoga retreat. Imagine strolling under the stunning aurora borealis; having a drink at the incomparable ice bar; taking a dip in a Nordic thermal bath; or relaxing in a cabana peering into the sunset on an exotic beach.

What else can you conjure up? The potential is endless!





GROUND
ARRIVAL LOUNGE A
Artist's Impression



GROUND
ARRIVAL LOUNGE B
Artist's Impression

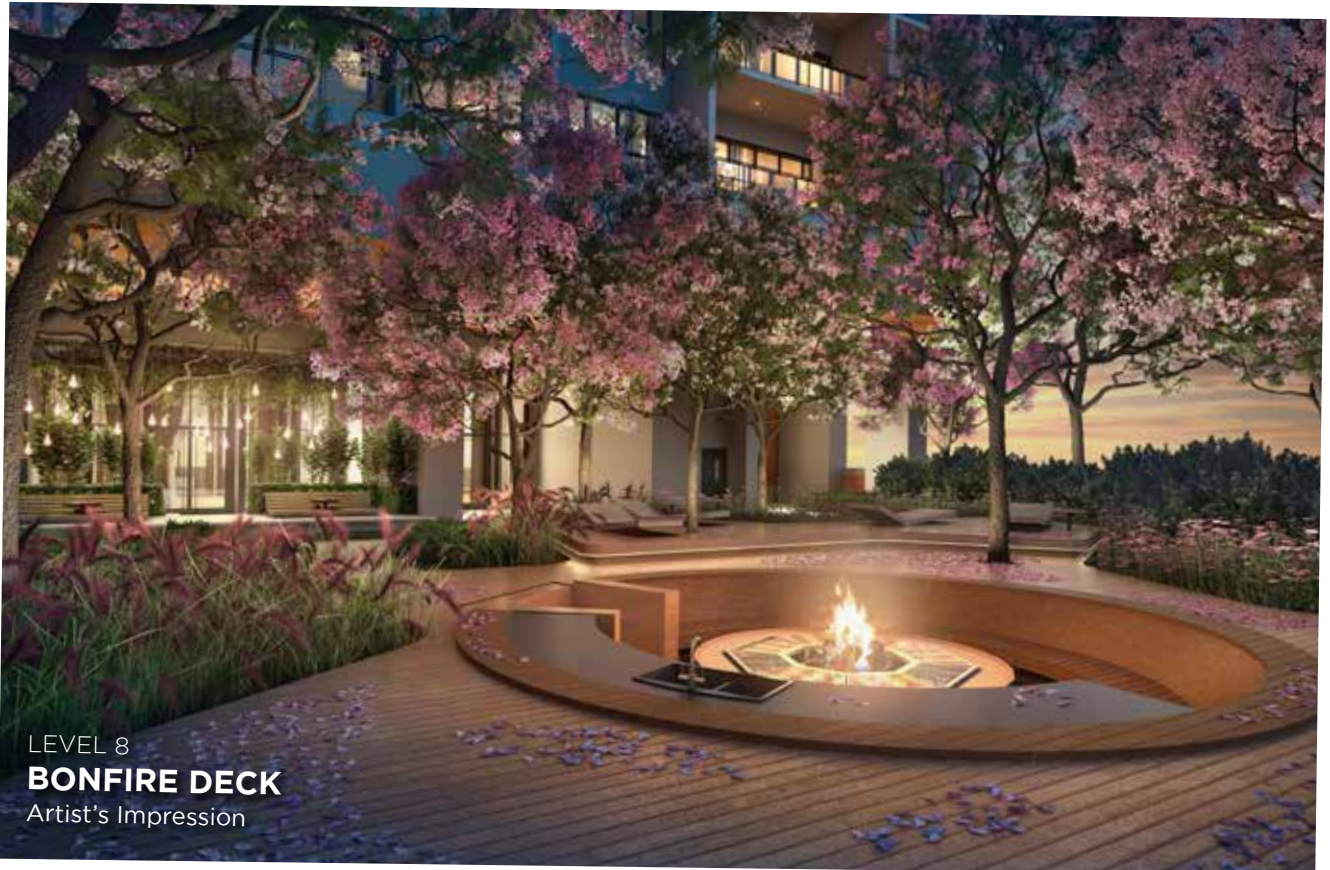


GROUND
GRAND GATEWAY
Artist's Impression



to :

*"The real voyage of discovery
consists not in seeking new
landscapes, but in having new eyes"*
- Marcel Proust.



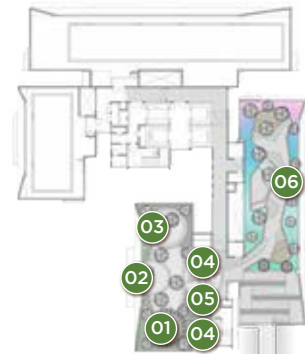
LEVEL 8
BONFIRE DECK
Artist's Impression



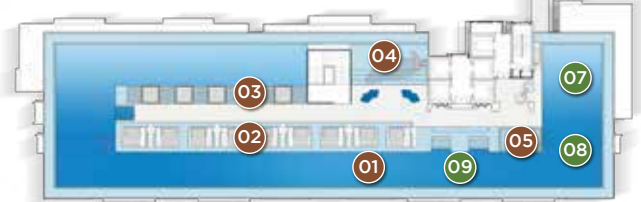
FACILITIES PLAN



SKY FACILITIES



LEVEL 51



LEVEL 53

GROUND

- 01 . GRAND GATEWAY
- 02 . DROP-OFF A
- 03 . ARRIVAL LOUNGE A
- 04 . GARDEN GALLERIA
- 05 . GATEWAY
- 06 . ARRIVAL LOUNGE B
- 07 . DROP-OFF B

LEVEL

8

- 01 . BANQUET HALL
- 02 . PRE-FUNCTION LOUNGE
- 03 . GARDEN LOUNGE
- 04 . FLOATING GARDEN
- 05 . GYMNASIUM STUDIO
- 06 . YOGA GARDEN
- 07 . CELLAR DINING
- 08 . PICNIC DECK
- 09 . HERBS GARDEN
- 10 . SAKURA INSPIRED GARDEN
- 11 . BONFIRE DECK
- 12 . ADVENTURE PLAYSCAPE
- 13 . SUNKEN PLAY LAWN
- 14 . NIHON DINING & TEA
- 15 . HOBBIT PLAYHOUSE
- 16 . HOOP COURT
- 17 . TUBE TABLE TENNIS
- 18 . GOLF HUB

LEVEL

51

- 01 . ARCTIC DINING
- 02 . ARCTIC GARDEN LOUNGE
- 03 . ARCTIC VIEW DECK
- 04 . HERBS GARDEN
- 05 . ARTIC GRILL DECK
- 06 . AURORA SKY GARDEN

LEVEL

52

- 07 . MOROCCAN SKY LOUNGE
- 08 . SKY ICE BAR & DINE
- 09 . SKY BATH

LEVEL

53

- 01 . 360° SANTORINI SKY POOL
- 02 . FLOATING CABANA
- 03 . FLOATING HAMMOCK
- 04 . WHALE POOL
- 05 . SKY JACUZZI



LEVEL 53
360° SANTORINI SKY POOL
Artist's Impression

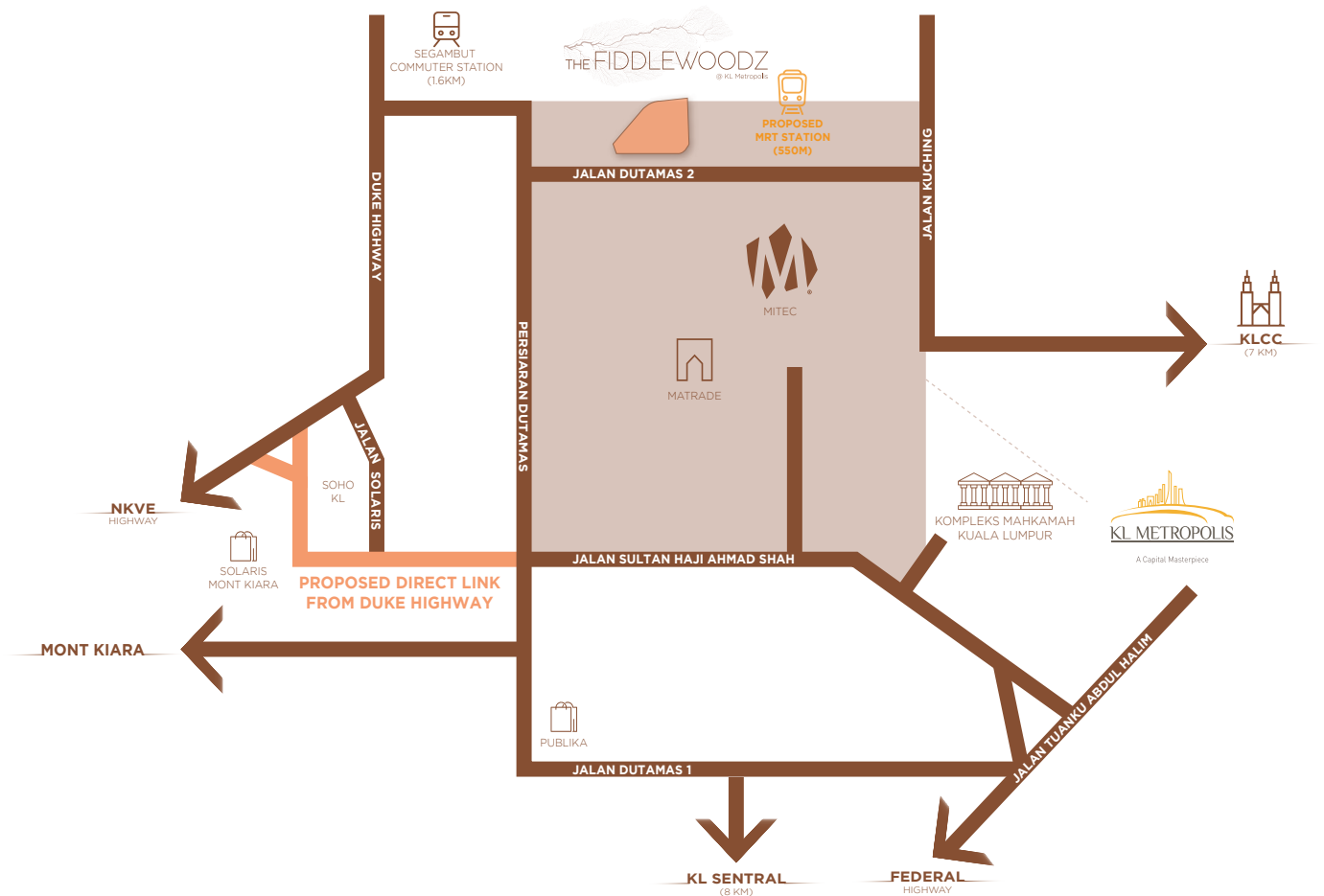
UNPARALLELED LOCATION & CONNECTIVITY

Located in the midst of a visionary international business district, The Fiddlewoodz @ KL Metropolis is part of an exciting new hub conceptualized as a key driver of growth in the north of Kuala Lumpur. KL Metropolis is a dynamic hub with corporate offices, residences, leisure and retail components designed for world-class living, working and business.

Complemented by the prestigious neighborhood of Mont Kiara, The Fiddlewoodz @ KL Metropolis is nestled within a cocoon of wide ranging amenities, facilities, and trendy and upscale lifestyle options. It is also served by multiple access routes and an integrated transport system for seamless connectivity around Klang Valley, making it a truly sought-after address.



LOCATION MAP



MEDICAL CENTRES

01. Global Doctors Hospital (4km)
02. KPJ Tawakkal KL Specialist Hospital (5km)
03. Hospital Kuala Lumpur (HKL) (6km)
04. ParkCity Medical Centre (6km)
05. Tung Shin Hospital Western Medical Department (7km)

SHOPPING CENTRES

01. Publika Shopping Gallery (1km)
02. 1 Mont' Kiara (3km)
03. Hartamas Shopping Centre (4km)
04. Quill City Mall, KL (5km)
05. Sunway Putra Mall (5km)
06. KLCC (7km)
07. Pavilion KL (7km)

EDUCATIONAL INSTITUTIONS

01. Kiaramas Primary School (1km)
02. French School Of Kuala Lumpur (LFKL) (2km)
03. Hevea French Primary School (2km)
04. Education House Solaris Mont Kiara (2km)
05. SJK(C) Khai Chee (2km)
06. Mont' Kiara International School (3km)
07. Babies & Casa Montessori International Preschool (3km)
08. SJK(C) Kepong 3 (4km)
09. Garden International School (4km)
10. The International School @ ParkCity (7km)
11. Cempaka International School Damansara Heights (8km)
12. The International School @ ParkCity, Early Years Centre (8km)
13. HELP University (11km)



NEW AGE INGENUITY



IVORY INTERPOINT SDN BHD [201401018192 (1094279-X)]

No.18, Block 2, Jalil Link, Jalan Jalil Jaya 2,
Bukit Jalil, 57000 Kuala Lumpur.

T +603 8993 9911 F +603 8993 9922

E info@exsim.com.my W exsim.com.my



EXSIM | THE FIDDLEWOODZ @ KL METROPOLIS SALES GALLERY

G88, Ground Level, Empire City, No 8, Jalan Damansara, PJU 8,
47820 Petaling Jaya, Selangor Darul Ehsan.

T +603 7629 0099 W fiddlewoodz.com.my

All information, items and/or products herein contained and/or displayed, including but not limited to measurement, features, materials, specifications, brands, colours, plans, drawings, images, pictures, visuals renditions, illustrations and presentation of interiors, furniture and fittings layout, landscapes, roads, access, lifestyle, scale models, show units and/or development are artist's impressions/renderings for illustration purposes only and are subject to change as may be required and/or recommended by the relevant authorities and/or the developer's architects, engineers and/or consultants without prior notification to you. Nothing contained herein shall be taken as identical representation of the actual state thereof or constitute or be construed to constitute an offer, a contract, part of the sale and purchase agreement (SPA), a representation and/or warranty on the part of the developer, unless expressly and specifically incorporated in the SPA. Prospective purchasers are advised to read and scrutinize the SPA together with its enclosures or to engage relevant independent professionals for advice prior to signing of the SPA. The developer and/or other related companies and parties shall neither be held responsible for any claims, error or inaccuracy nor be liable for any losses, damages, costs, expenses, or liabilities that may be incurred, suffered or sustained resulting from any reliance on any information, items and/or products herein contained and/or displayed or any part thereof.

• Developer: IVORY INTERPOINT SDN BHD [201401018192 (1094279-X)] • Developer's License No.: 20084-1/03-2023/0280(L) • Validity Period: 27/03/2021 - 26/03/2023 • Advertising Permit No.: 20084-1/03-2023/0280(P) • Validity Period: 27/03/2021 - 26/03/2023 • Approving Authority: Dewan Bandaraya Kuala Lumpur • Building Plan Approval No.: BP T2 OSC 2020 2529 • Land Tenure: Freehold • Restriction in Interest: This land cannot be transferred, pledged, or charged without prior consent from State Authority • Land Encumbrances: Charged to RHB Bank Berhad • Expected Date of Completion: April 2025 • Total Units: 679 Units [BLOCK A : 386 UnitS & BLOCK B : 293 Unit] • No. of Car-park: 2 Units • Selling Price: BLOCK A - RM1,025,760.00(min) - RM1,756,440.00(max) | BLOK B - RM1,025,760.00(min) - RM1,716,120.00(max) • 2% Bumiputra Discount • Type of Development: Serviced Apartment