



PropertyGuru  
ASIA AWARDS  
MALAYSIA  
with iProperty  
2022

**WINNER**

BEST WATERFRONT  
HIGH-RISE DEVELOPMENT

E+ISLAND  
LAKE HAVEN  
PUCHONG

DIVE INTO LIFE &  
MAKE A SPLASH

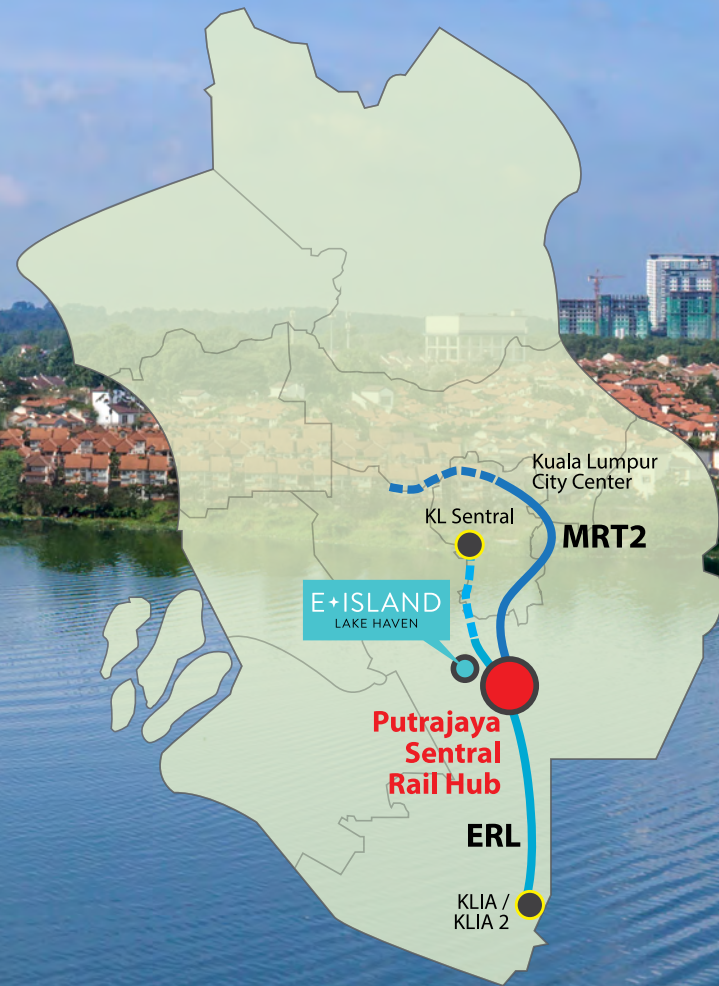


COME HOME TO YOUR VERY OWN PRIVATE  
CONTEMPORARY RESORT OF BREATHTAKING  
WATER VIEWS AND CAPTIVATING SURROUNDS  
THAT WILL ENCIRCLE YOU IN SERENITY.

The epitome of lakefront living, E'Island Lake Haven is where the energy of city life and the convenience of amenities converge in tranquil resort-style living. With only 60 units per acre, this premier low-density waterside development promises a life of excitement with new surprises at every turn.



IN THE HEART OF PUCHONG,  
AT THE DOORSTEP OF  
PUTRAJAYA SENTRAL RAIL HUB



8km away from Puchong City Centre, E'Island Lake Haven is the epitome of resort-style waterfront living and is the prime new development within the heart of Puchong City.

8km away from Putrajaya Sentral, the new integrated rail hub with linked rail services of ERL and MRT2.



DIRECT ACCESS TO  
4 HIGHWAYS  
ELITE, MEX, LDP, SKVE



2 CAR PARKS  
FOR EACH UNIT  
3 CAR PARKS FOR  
LIMITED UNITS)



STARTING  
FROM RM330,000



SEMI-FURNISHED  
WITH 4 AIR-CONS



STARTING SIZE  
FROM 881 SQFT

LUXURIOUS FURNISHED RESIDENCES  
WITH 360° LAKE VIEWS AT THE  
DOORSTEP OF PUTRAJAYA SENTRAL  
RAIL HUB



A SINGLE ENTRY ENCLAVE  
DESIGNED FOR SECURITY AND  
PEACE OF MIND WHERE CHILDREN  
ROAM FREE, ADULTS ENJOY LIFE  
AND COMMUNITY THRIVES.



The Grand Entrance augmented by a top of the line security system immediately sets the tone for a life well lived in luxe surrounds in this 19.03-acre gated and guarded sanctuary:

4-Tier Security

All access is via check-in points only at

- Security boom gate
- Car park entry
- Lift lobby entrance
- Individual floors

Perimeter CCTVs

Directly linked to a network of CCTVs at key points including the guardhouse, lobby and perimeter fencing to monitor the enclave every minute.

Advanced Security System & PrimeXcess to:

- Oversee the entire enclave.
- Identify and alert security personnel to doors that are left ajar or forced open.



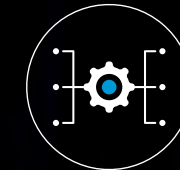
ALTERNATIVE  
ACCESS SOLUTIONS

In the unlikely event of power outage or a missing mobile, the system is fully backed-up via manual keypads and keysets.



YOUR VERY OWN PERSONAL  
IDENTIFICATION DEVICE

No more clumsy cards, bulky keys or confusing pin codes, just one home access system on your smartphone.



FULLY INTEGRATED  
SYSTEM

The system manages access every step of the way from boom gate, car park, lift lobby, up secured lifts into your home.



EMERGENCY FEATURES  
FOR PEACE OF MIND

In times of emergency, there is a built-in intercom or Panic Button for help.



INVITE &  
PRE-REGISTER GUESTS

Invite guests with the app and automatically register them, including visiting time and dedicated access.



INTEGRATED BILLING  
& PAYMENT SYSTEM  
(ADD-ON MODULE)

Receive bill notifications, reminders and pay management fees without any stress.



UNPARALLELED  
MANAGEMENT CONTROL

State-of-the-art cloud-based tools give you instant and real-time access to data and reports.



ACCESS TO FACILITIES  
& PUBLIC AREAS

This easy mobile app monitors and ensures residents' only access to all public areas and facilities.



POWERFUL  
MOBILE APP

There is a function for every need, fully customisable e.g. booking facilities, payment reminders and more.







GRAND DOUBLE VOLUME LOBBY WITH WAITING LOUNGE

Every Tower boasts its very own private double volume Grand Lobby and dedicated *Porte Cochere*. Framed by an elegant floating roof, this stunning entrance statement invites arrivals in to comfort and prestige. Beyond the threshold, modern finishes shimmer in welcome within the trendy resort-style Waiting Lounge. As first impressions go, these Lobbies will stamp an unforgettable experience from the moment you step inside.

A WELCOME LIKE NO OTHER AWAITS  
IN THE AIRY GRAND LOBBY TO ENCHANT  
YOU WITH LUSH GREENS AND ENDLESS  
VISTAS OF THE LAKE BEYOND.





2. LAKEFRONT GYM & PAVILION (WIFI ZONE 📶)



3. 500M LAKEFRONT BOARDWALK & JOGGING TRACK



4. TRELIS PAVILION



1. CHILDREN'S H<sub>2</sub>O PLAY POOL & FUN WATER SLIDES



BEAUTIFUL ONE DAY, PERFECT THE NEXT;  
ESCAPE FROM THE EVERYDAY BUSTLE OF  
LIFE AND IMMERSE YOURSELF IN THE SHEER  
DELIGHT OF WATERFRONT LIVING.

The pristine blue lake forms a majestic frame for the enclave and is the centrepiece of community. A Boardwalk complemented by a 500m jogging track that winds along the water's edge will draw you from the comforts of home. Once outside, landscaped lawns lined with leafy trees and trellises invite you to savour a seemingly endless menu of family-friendly facilities.



5. KID'S SAND PLAY



## SITE PLAN

### SECURITY

- 1 Guardhouse
- 2 Lift Lobby with PrimeXcess

### NATURE

- 3 Open Lawn
- 4 Sunrise Garden
- 5 Trellis Pavilion
- 6 Herb Garden
- 7 Reflexology Path

### EXERCISE & RECREATION

- 8 BBQ Pit
- 9 Lakefront Gym
- 10 Pavilion (Wifi Zone)
- 11 Aqua Gym
- 12 Dipping Pool
- 13 Water Slides
- 14 H<sub>2</sub>O Play Pool
- 15 Playground
- 16 Outdoor Gym
- 17 Lakefront Boardwalk
- 18 Jogging Track
- 19 Gazebo
- 20 Outdoor Yoga Deck

- 21 Outdoor Aerobics Deck
  - 22 Sand Play Area
- ### COMMUNITY
- 23 Surau
  - 24 Multipurpose Hall
    - Badminton Court
    - Basketball Court
    - Futsal Court
    - Events Venue
  - 25 Changing Rooms
  - 26 Kindergarten & Nursery
  - 27 Convenience Store
  - 28 Storage Units
  - 29 Management Office



A MERRY PLACE WHERE WE  
PLAY NICE AND FAIR, LET LOOSE,  
DO THE RIGHT THINGS AND DREAM  
BIG IN TECHNICOLOUR BRIGHTS.



Find room to breathe, explore, play and exercise away from the noise of everyday living in facilities created to nurture healthy activity and create strong community bonds.

Indulge in your favourite sports or pastimes in carefully appointed indoor facilities anchored by the stylish Lakefront Gym. Badminton, futsal, basketball, take your pick any day of the week. Alternatively, there are BBQ Pits for gatherings and plenty of space for lounging, yoga or simply doing nothing.

Conveniently located retail units will offer daily essentials, laundry services and F&B whilst a spacious Surau, Kindergarten and Nursery round up this complete list of facilities. Truly a residential enclave that caters to all tastes.



**LAKEFRONT GYM**  
Work up a sweat; stretch those muscles to the soothing vistas of the Central Lake.



**H<sub>2</sub>O PLAY POOL**  
Complete with fun slides, you are always one splash away from a good mood here.



**500M LAKEFRONT BOARDWALK & JOGGING TRACK**  
Combine exercise, fresh air and the beauty of nature just outside your door.



**SAND PLAY AREA**  
Your patch of beach to do as you please, from sand hopscotch to building sandcastles.



**MULTIPURPOSE HALL**  
The perfect place for a court game, catching up or celebrating events in good company.



**CHILDREN'S PLAYGROUND**  
2 safe zones with an array of play equipment to keep kids busy all day.







## GARDEN SUITES

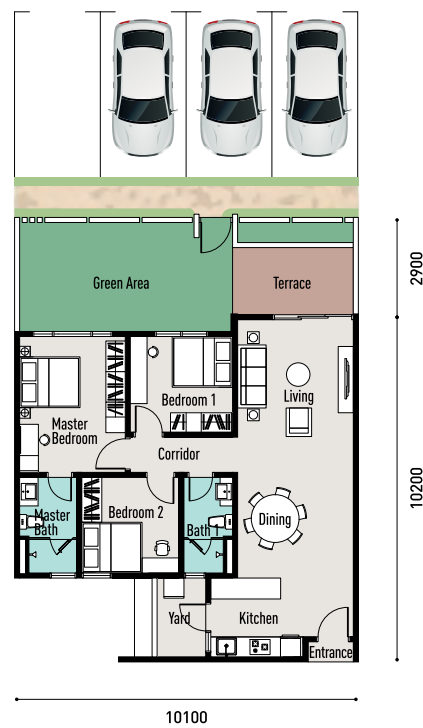
MERE STEPS AWAY FROM THE WATER,  
HOME IS THE ABSOLUTE MOODBOOSTER THAT TRANSPORTS  
YOU TO A NEW LEVEL OF PEACEFUL CALM.

Limited to 32 exclusive units only, each with their very own private courtyard, this open plan home will easily fit a family of six. Boasting views of the lake from every room, it opens directly into the garden, remaining private and closed away from passers by. Two designated car parks in front of each unit make coming and going a breeze.

- All units are furnished with Signature brand fittings and finished off with luxe touches such as
- Master Bath Fittings (Hot Water Storage Tank System, Shower Screen and Vanity Top)
  - 3 Car Parks (Type G1, G3 & G4)
  - Signature Brand Kitchen Cabinets
  - 2 Signature Brand Wardrobe Sets
  - 4 Air-conditioners

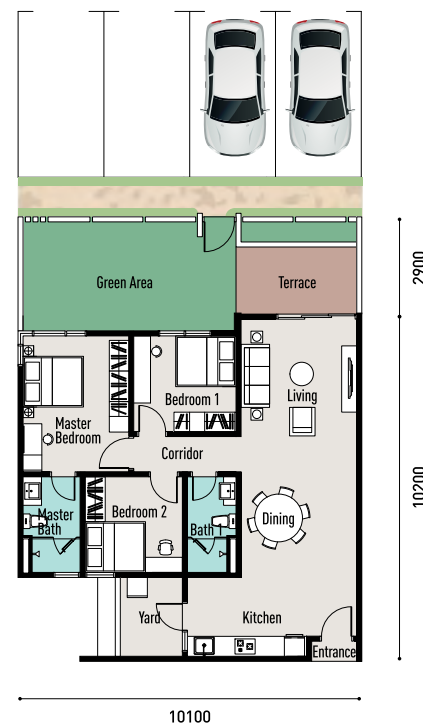
### TYPE G1

Built-up: 979 sqft  
Garden: 350 sqft



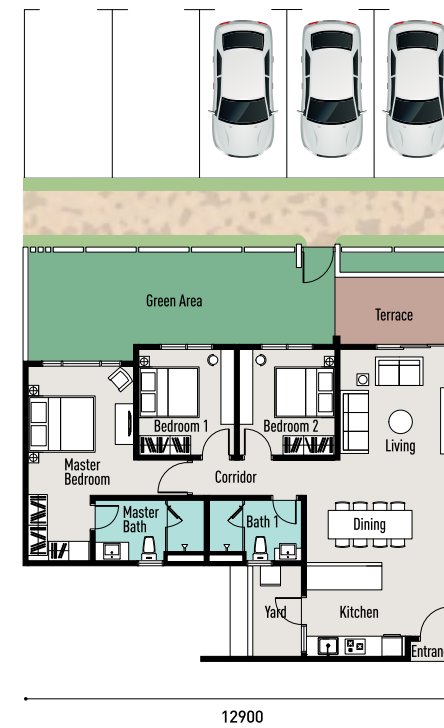
### TYPE G2

Built-up: 1,012 sqft  
Garden: 350 sqft



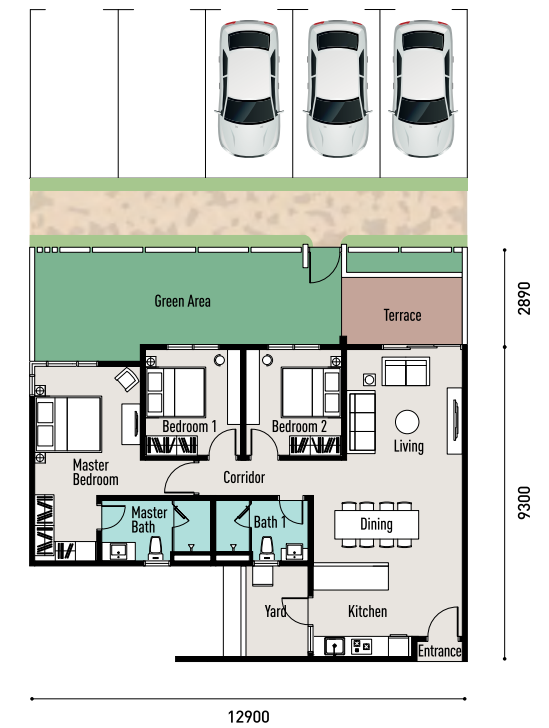
### TYPE G3

Built-up: 1,086 sqft  
Garden: 419 sqft



### TYPE G4

Built-up: 1,099 sqft  
Garden: 419 sqft



LIMITED GARDEN UNITS WITH 2 CAR PARKS IN FRONT



GARDEN SUITES (TYPE G) MASTER BATH





## LAKEVIEW SUITES

THE COLOURFUL REFLECTIONS AND COOLING RIPPLES OF THE WATER WILL ENERGISE THE SENSES AND TRANSFORM THE SPACES OF HOME, IMPROVING YOUR ENTIRE OUTLOOK.

The quintessential picture of waterfront living, these homes' luxurious finishes are enhanced by beautiful views of the lake in every room. Its flowing layout can accommodate 6 and includes

- Spacious Dry Kitchen • Complete Fittings in the Master Bath (Shower Screen, Instant Hot Water System and Vanity Top)
- Signature Brand Kitchen Cabinets • 2 Signature Brand Wardrobe Sets • 4 Air-conditioners • Wet Kitchen (Type C3 Only)
- 2 Signature Brand Kitchen Cabinets (Type C3 Only) • 3 Car Parks (Type C3 Only) • 1 Private Storage Locker (Type C3 Only)



LAKEVIEW SUITES (TYPE C) LUXURY MASTER BATH

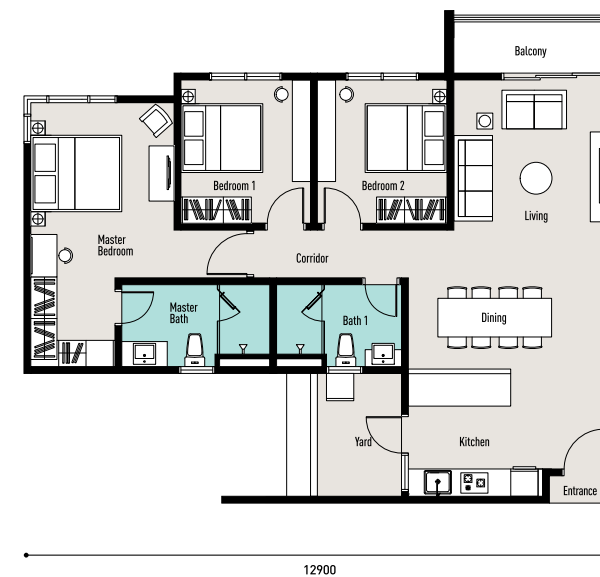
### TYPE C1

Built-up: 1,135 sqft  
Intermediate



### TYPE C2

Built-up: 1,148 sqft  
Corner



### TYPE C3

Built-up: 1,263 sqft  
End



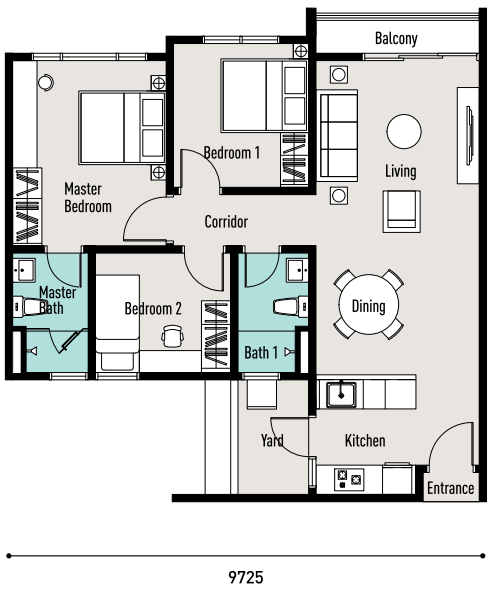




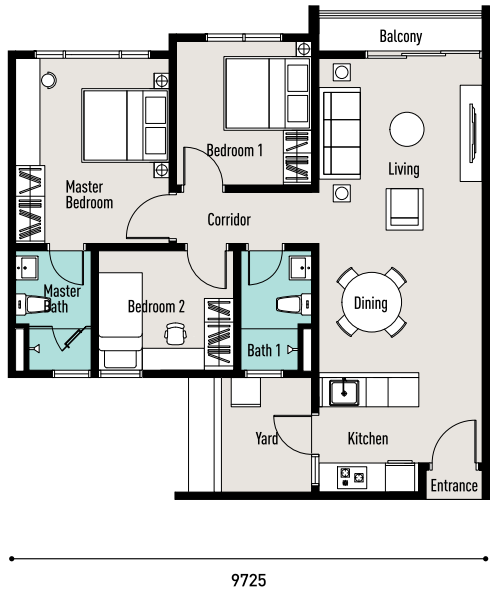
## FAMILY SUITES

FOCUS SHIFTS FROM THE MUNDANE TO FAMILY AS THE COOL BREEZE ROLLS IN AND THE SOOTHING SOUND OF WATER EVAPORATES THE STRESSES OF THE DAY.

**TYPE A1**  
Built-up: 881 sqft  
Intermediate



**TYPE A2**  
Built-up: 892 sqft  
Corner



### TYPE A

Affordable and practical open-plan units that can accommodate a family of 5.

- Master Bath Fittings (Instant Hot Water System and Shower Screen)
- Signature Brand Kitchen Cabinets • Signature Brand Wardrobe Sets • 4 Air-conditioners

**TYPE B1**  
Built-up: 977 sqft  
Intermediate



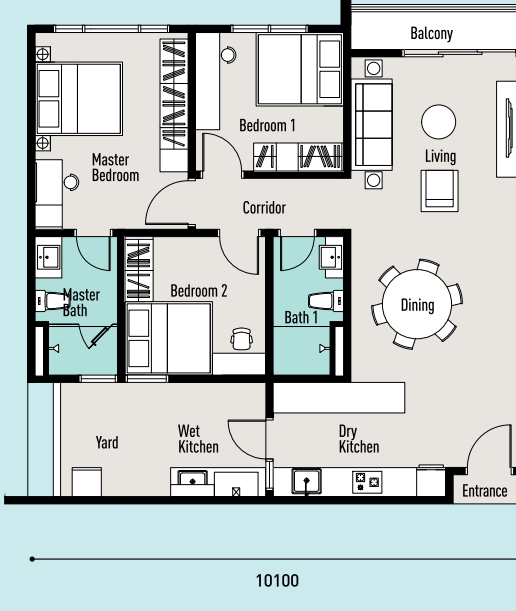
**TYPE B2**  
Built-up: 1,010 sqft  
Corner



**TYPE B3**  
Built-up: 1,010 sqft  
Corner



**TYPE B4**  
Built-up: 1,073 sqft  
End



### TYPE B

Thoughtfully laid out to comfortably suit a larger family of 6, these lake-facing units feature

- Spacious Dry Kitchen • Complete Fittings in the Master Bath (Shower Screen, Instant Hot Water System and Vanity Top)
- Signature Brand Kitchen Cabinets • Signature Brand Wardrobe Set • 4 Air-conditioners
- Additional Signature Brand Wet Kitchen Cabinets and Full Appliances (Type B4 only)





FAMILY SUITES (TYPE B) LIVING HALL OPENS TO MAGNIFICENT LAKE VIEWS

SPACIOUS DINING AREA WITH SIGNATURE KITCHEN CABINETS



THE HIDDEN TREASURES THAT LIE WITHIN EVERY SUITE AT E'ISLAND LAKE HAVEN EXUDES A DISTINCTIVE SENSE OF PLACE YOU CAN BE PROUD OF.

Clean lines, sleek form and premium fittings and furnishings are innate to every unit. Handpicked brands and finishings crafted to distinction to nurture a growing family.

- Samsung Refrigerator • Rinnai Hood & Hob
- Air-conditioner Units • Sorrento Sanitary Fittings
- Shower Screen • Hot Water System • Stylish Vanity Top



MASTER BATH WITH SHOWER SCREEN, HOT WATER SYSTEM & VANITY TOP



FAMILY SUITES (TYPE B) MASTER BEDROOM FURNISHED WITH SIGNATURE WARDROBE



ALL UNITS FURNISHED WITH SIGNATURE KITCHEN CABINET

IN COLLABORATION WITH

**SAMSUNG**

**Rinnai**

**Sorrento**

**SIGNATURE KITCHEN**

**SIGNATURE WARDROBE**



# SPECIFICATIONS

Structure	Reinforced Concrete								
Wall	R.C. Wall / Mansory Wall								
Roof	RC Flat Roof / Metal Deck								
Ceiling	Concrete Slab / Skim Coat and Paint / Fibrous Plaster Ceiling								
Windows	Aluminium Framed Window								
Doors	Aluminium Framed Door / Timber Door								
Ironmongery	Quality Locksets								
Floor Finishes	Living / Dining / Kitchen	Ceramic Tiles							
	All Bedrooms	Ceramic Tiles							
	All Bathrooms	Ceramic Tiles							
	Yard / Balcony	Ceramic Tiles							
		A1/A2	B1/B2/B3	B4	C1/C2	C3	G1/G2	G3/G4	
Wall Finishes	Bathrooms	Ceramic Tiles	/	/	/	/	/	/	/
	General	Plaster / Skim Coat and Paint	/	/	/	/	/	/	/
	Yard	Ceramic Tiles up to 1500mm	/	/	/	/	/	/	/
Sanitary & Plumbing Fittings	Bathrooms	WC	2	2	2	2	2	2	2
		Basin	2	2	2	2	3	2	2
		Instant Hot Water System	1	1	1	1	1	-	-
		Storage Tank Hot Water System	-	-	-	-	-	1	1
		Shower Screen	1	1	1	2	2	2	2
	Vanity Top	-	2	2	2	2	2	2	
Yard	Tap	1	1	1	1	1	1	1	
Electrical Installations	Lighting Points	16	16	17	21	24	17	22	
	Ceiling Fan Point	4	4	4	4	4	4	4	
	Air-cond Point	4	4	4	4	4	4	4	
	Water Heater Point	2	2	2	2	2	2	2	
	Switch Socket Outlet	13	16	16	17	17	16	17	
	SMATV Point	1	1	1	2	2	1	2	
	Door Bell Point	1	1	1	1	1	1	1	
	Fiber Wall Socket	1	1	1	1	1	1	1	
Air-conditioning Split Unit	Master Bedroom	1	1	1	1	1	1	1	
	Bedroom 1	1	1	1	1	1	1	1	
	Bedroom 2	1	1	1	1	1	1	1	
	Living	1	1	1	1	1	1	1	

			A1/A2	B1/B2/B3	B4	C1	C2	C3	G1/G2	G3/G4	
Dry Kitchen Top & Bottom Kitchen Cabinets	Door and Panel Material	MFC Laminate	1	1	1	1	1	1	1	1	
	Internal Carcass	Standard White Carcass	1	1	1	1	1	1	1	1	
	Hinges	Soft Close Hinges	1	1	1	1	1	1	1	1	
	Drawer Runner	Soft Close Drawer Runner	1	1	1	1	1	1	1	1	
	Handle	Aluminium L&C Channel	1	1	1	1	1	1	1	1	
	Worktop	Solid Surface	1	1	1	1	1	1	1	1	
Dry Kitchen Appliances	Vitro Ceramic Hob	Brand: Rinnai	1	1	1	1	1	1	1	1	
	Single Burner Gas Hob	Brand: Rinnai	1	1	1	1	1	1	1	1	
	Slimline Hood	Brand: Rinnai	1	1	1	1	1	1	1	1	
	Sink & Tap	Brand: Sorento	1	1	1	1	1	1	1	1	
	2-Door Refrigerator	Brand: Samsung	1	1	1	1	1	1	1	1	
Wet Kitchen Top & Bottom Kitchen Cabinets	Door and Panel Material	MFC Laminate	-	-	1	-	-	1	-	-	
	Internal Carcass	Standard White Carcass	-	-	1	-	-	1	-	-	
	Hinges	Soft Close Hinges	-	-	1	-	-	1	-	-	
	Drawer Runner	Soft Close Drawer Runner	-	-	1	-	-	1	-	-	
	Handle	Aluminium L&C Channel	-	-	1	-	-	1	-	-	
	Worktop	Solid Surface	-	-	1	-	-	1	-	-	
Wet Kitchen Appliances	Vitro Ceramic Hob	Brand: Rinnai	-	-	1	-	-	1	-	-	
	Single Burner Gas Hob	Brand: Rinnai	-	-	1	-	-	1	-	-	
	Chimney Hood	Brand: Rinnai	-	-	1	-	-	1	-	-	
	Sink & Tap	Brand: Sorento	-	-	1	-	-	1	-	-	
Masterbedroom Built-in Wardrobe	Door Panel	MFC Laminate	1	1	1	-	-	-	1	-	
	Internal Carcass	MFC Laminate	1	1	1	-	-	-	1	-	
	Hinges	Soft Close Hinges	1	1	1	-	-	-	1	-	
	Drawer Runner	Soft Close Undermount Drawer Runner	1	1	1	-	-	-	1	-	
	Handle	L-angle Bar	1	1	1	-	-	-	1	-	
Masterbedroom Walk-in Wardrobe	Door Panel	MFC Laminate	-	-	-	1	1	1	-	1	
	Internal Carcass	MFC Laminate	-	-	-	1	1	1	-	1	
	Hinges	Soft Close Hinges	-	-	-	1	1	1	-	1	
	Drawer Runner	Soft Close Undermount Drawer Runner	-	-	-	1	1	1	-	1	
Masterbedroom Dressing Table With Mirror	Panel	MFC Laminate	-	1	1	-	1	-	1	-	
	Drawer	Soft Close	-	1	1	-	1	-	1	-	
Masterbedroom Open-Shelved Cabinet	Panel	MFC Laminate	-	1	1	-	-	-	1	-	
	Drawer	Soft Close	-	1	1	-	-	-	1	-	
Bedroom 1 Built-in Wardrobe	Door Panel	MFC Laminate	-	-	-	1	1	1	1	1	
	Internal Carcass	MFC Laminate	-	-	-	1	1	1	1	1	
	Hinges	Soft Close Hinges	-	-	-	1	1	1	1	1	
	Drawer Runner	Soft Close Undermount Drawer Runner	-	-	-	1	1	1	1	1	
	Handle	L-angle Bar	-	-	-	1	1	1	1	1	



## AMENITIES WITHIN 10KM RADIUS

### 9 SCHOOLS & EDUCATION INSTITUTIONS

- SK Putra Perdana
- SK Putra Perdana 2
- SMK Putra Perdana
- SJK(C) Sin Ming
- SK Puchong Utama
- Multimedia University
- Universiti Islam Malaysia
- Universiti Teknologi Kreatif LimKokWing
- Universiti Putra Malaysia

### 7 CLINICS & MEDICAL INSTITUTIONS

- Columbia Asia Hospital
- KPMC Specialist Centre
- Hospital Putrajaya
- Hospital Serdang
- Klinik Mediviron
- Klinik 1 Malaysia
- Klinik Kesihatan Putrajaya

### 11 SHOPPING MALLS

- AEON Big Puchong Utama
- Tesco Extra Bandar Bukit Puchong
- Giant Hypermarket Bandar Puteri
- One City
- Giant Hypermarket Putra Heights
- Giant Seri Kembangan
- AEON Equine Park
- D'Pulze Cyberjaya
- IOI Mall Puchong
- Alamanda Putrajaya
- IOI City Mall Putrajaya

## WHY CHOOSE US?



Strategic location in Puchong City with direct access to  
**4 HIGHWAYS**



Selected units come with  
**CAR PARK STORAGE**



Security powered by the latest mobile phone bluetooth control system  
**PRIMEXCESS**



500m jogging track complemented by  
**THE LAKEFRONT BOARDWALK**



**LOW-DENSITY** development with 60 units per acre



A spread of  
**29 FACILITIES** for leisure and relaxation



Limited Garden Suites that open to a  
**PRIVATE GARDEN AND TERRACE**



**8 KM** to nearest MRT and LRT stations



Affordable lakefront apartments starting  
**FROM RM330K**



Every unit comes with  
**2 CAR PARKS**  
Selected units come with 3 car parks



8km to Pusat Bandar Puchong,  
8km to  
**PUTRAJAYA SENTRAL RAIL HUB**

## ANOTHER LIFESTYLE INNOVATION BY GBG

### CURRENT PROJECTS



**THE PEAK**  
JOHOR BAHRU CITY CENTRE

Gabungan AQRS is a Malaysian property and infrastructure company listed on Bursa Malaysia (Listing code: GBGAQRS).

With a wealth of experience across a broad range of infrastructure products, GBG is dedicated to pursuing the highest standards in delivering the most extraordinary products.

We are determined to provide exceptional value by challenging the norm and going beyond expectations in design, product development, customer service and sales.

We are committed to transform the way we live, and to inspire future generations to raise the bar.

Today, the evolution of our four individual businesses to one strong group has resulted in a strong company, poised to embark on a new phase of growth.

### COMPLETED PROJECTS



**CONTOURS**  
MELAWATI HEIGHTS, SELANGOR



**PERMAS CENTRO**  
JOHOR BAHRU



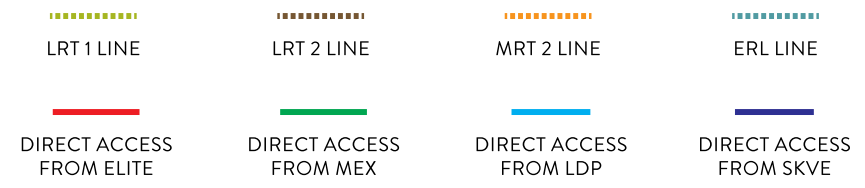
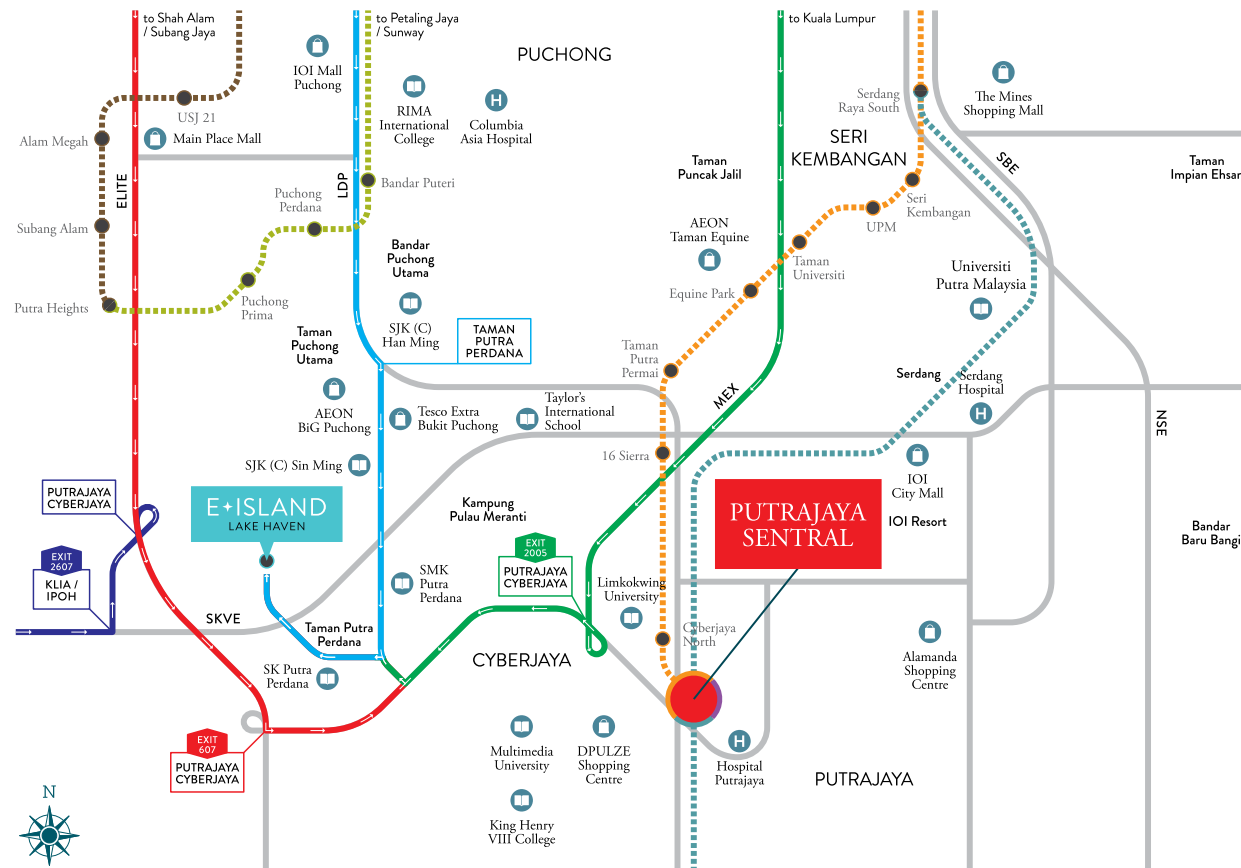
**GOMBAK GROVE**  
SRI GOMBAK, SELANGOR



SALES HOTLINE:  
**013 8980 899**

## LAKEFRONT HOMES AT THE DOORSTEP OF PUTRAJAYA SENTRAL RAIL HUB

Directly accessible via four major highways - ELITE, SKVE, LDP and MEX,  
 E'Island Lake Haven is 8km away from Putrajaya Sentral Rail Hub. This puts it  
 just a train ride away from Kuala Lumpur city centre and major travel like KLIA,  
 KLIA2, ERL and MRT2 rail services



Sales Gallery  
  
**GBG SALES GALLERY**

Project Site  
  
**E'ISLAND LAKE HAVEN**

**PropertyGuru**  
**ASIA AWARDS**  
**MALAYSIA**  
 with iProperty  
**WINNER**  
**BEST WATERFRONT**  
**HIGH-RISE DEVELOPMENT**



**AQRS THE BUILDING COMPANY SDN BHD** 552540-x  
 (A wholly owned subsidiary of Gabungan AQRS Berhad)  
 G-58-G, Blok G, Jalan Teknologi 3/9, Bistari De' Kota, Kota Damansara,  
 PJU 5, 47810 Petaling Jaya, Selangor Darul Ehsan, Malaysia.

T +603 6141 8870  
 F +603 6141 8871  
 E info@gbg.com.my  
 W www.gbg.com.my

**E+ISLAND**  
**LAKE HAVEN**  
**PUCHONG**

Disclaimer: All pictures, photos and renderings contained herein are artist's impressions only. The information contained herein is subject to change without notification as may be required by the relevant authorities or developer's project consultant(s). Whilst every care has been taken in providing this information, the owner, developer, managers cannot be held responsible for any variations. For avoidance of doubt on the specifications, please always refer to the Sale & Purchase Agreement. All illustrations and drawings contained herein are artist's impressions and subject to change without prior notice. Whilst every care has been taken in providing this information, the owner, developer, managers cannot be held liable for any variations or inaccuracies.

Lake Haven Residence (Apartment) \* Developer's License No.: 9262-4/02-2023/01349(L) \* Validity Period: 22/02/2022 - 21/02/2023 \* Advertising & Sales Permit No.: 9262-5/04-2023/0097(R)-(S) \* Validity Period: 20/04/2022 - 19/04/2023 \* Approving Authority: Majlis Perbandaran Sepang \* Approved Building Plan No.: MP/Sepang 600-34/1/94(32) \* Tenure of Land: Leasehold Expiring 5/11/2113 \* Restriction of Interest: Nil \* Land Encumbrances: Maybank Islamic Berhad \* Expected Completion Date: August 2023 \* Blok A - Total Unit: 285 \* Blok B - Total Unit: 285 \* Selling Price: (Min) RM429,800 - (Max) RM684,800 (100 units) \* Bumiputera Discount: 7%  
**\*IKLAN INI TELAH DILULUSKAN OLEH JABATAN PERUMAHAN NEGARA\***

Lake Haven Residence (Apartment) \* Developer's License No.: 9262-4/02-2023/01349(L) \* Validity Period: 22/02/2022 - 21/02/2023 \* Advertising & Sales Permit No.: 9262-6/04-2023/0096(R)-(S) \* Validity Period: 23/04/2022 - 22/04/2023 \* Approving Authority: Majlis Perbandaran Sepang \* Approved Building Plan No.: MP/Sepang 600-34/1/94(32) \* Tenure of Land: Leasehold Expiring 5/11/2113 \* Restriction of Interest: Nil \* Land Encumbrances: Maybank Islamic Berhad \* Expected Completion Date: August 2023 \* Blok C - Total Unit: 285 \* Blok D - Total Unit: 285 \* Selling Price: (Min) RM429,800 - (Max) RM479,800 (213 units) \* Bumiputera Discount: 7%  
**\*IKLAN INI TELAH DILULUSKAN OLEH JABATAN PERUMAHAN NEGARA\***



# E+ISLAND

LAKE HAVEN  
PUCHONG

